

FOR:

- Anaerobic Digesters
- Landfill Gas Applications
- Biogas/Methane Utilization
- Agricultural Applications
- Food and Beverage

A Global Leader

Groth Corporation is a global leader with over 25 years of experience in the development and manufacturing of wastewater and biogas applications



Model 8391B Waste Gas Burner

Groth Corporation Provides a Complete Line of Equipment for the effective and safe control of gas from anaerobic digesters, covered lagoons and landfill gas sites. Our products are developed in close collaboration with end-users, technical and university laboratories, and licensed testing facilities. When you install Groth engineered digester gas control equipment, you can depend on lower maintenance costs, better operational safety and close customer assistance that starts when your inquiry first reaches the sales department.

Represented by:

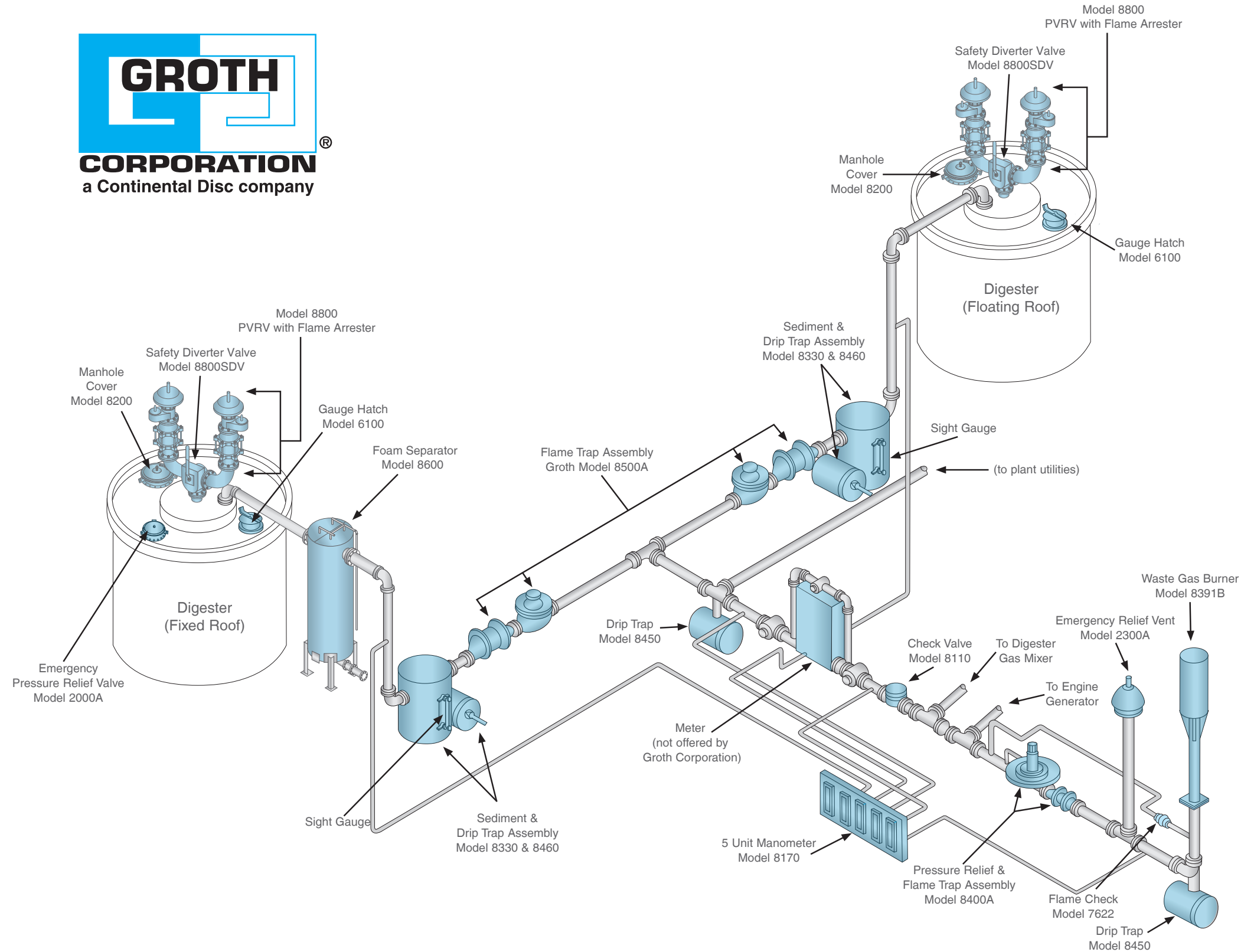


1185 Tower Road
Schaumburg, IL 60173
Ph: 847.885.0300 Fax: 847.885.0303
lindenequipment.com

TYPICAL FLOW AND INSTALLATION DIAGRAM SHOWING A MULTIPLE DIGESTER GAS SYSTEM

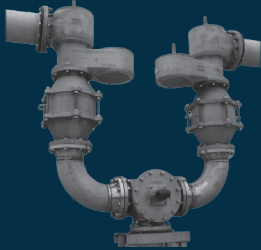


This schematic is for general presentation only and is not intended to represent a specific design.



Please consult the Groth Wastewater Biogas Catalog or www.grothcorp.com for complete information on listed products.

DIGESTER COVER EQUIPMENT



Model 8800SDV

Safety Diverter Valve

- Provides a quick and easy way for valve changeover
- Allows a no-interruption process
- Easy and safe maintenance with no down time



Model 8800A and 8820A

Pressure Relief and Vacuum Breaker Valve with Flame Arrester

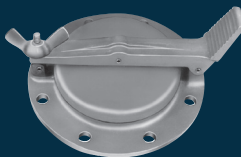
- Protects tank from damage created by overpressure or excessive vacuum
- Provides protection from externally caused sources of heat and ignition
- Proven spiral wound, crimped ribbon, flame element
- Factory Mutual and ATEX approved flame arrester



Model 8200

Roof Manhole Cover

- Non-sparking and gas-tight
- Provides quick and easy access
- Uniform surface seating
- Limited maintenance required



Model 6100

Sample and Gauge Hatch

- Assures uniform seating
- Incorporates a positive cover lockdown to assure a tight seal

DIGESTER COVER EQUIPMENT (continued)



Model 7618 - Vertical Model 7628 - Horizontal

Flame Arresters

- Unit designed for quick and easy cleaning and maintenance
- Protects the system from externally caused sources of heat and ignition for increased fire protection and safety
- Factory Mutual and ATEX approved



GAS SAFETY AND CONTROL EQUIPMENT

Model 8330 - Sediment Trap Model 8331 - Condensate Accumulator

- Removes excess water and sediment
- Quick and easy cleaning is facilitated by removing top cover
- Available with flanged connections as standard
- Drip trap and sight glass attach quickly
- Optional high and low level alarm switches



Model 8600

Foam Separator

- Eliminates foam
- Removes particles
- Continuous water spray systems
- High and low level alarms



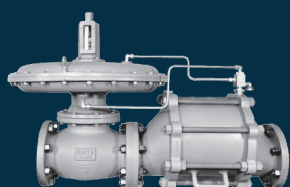
GAS SAFETY AND CONTROL EQUIPMENT (continued)



Model 8450 - Automatic Model 8460 - Manual Model 8490 - Electrically Actuated

Drip Traps

- Provides safe removal of liquids from the low point in gas control line
- Designed for quick opening and maintenance
- Easily attaches to Groth Corporation sediment trap for extra efficiency



Model 8400A

Pressure Relief and Flame Trap Assembly

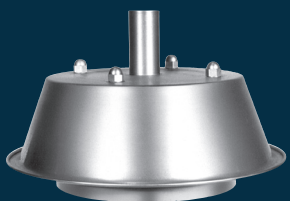
- Maintains upstream pressure, allowing only surplus gas to flow downstream
- Field adjustable set pressure
- Integral thermal valve stops gas flow when flashback is sensed at the flame arrester
- Easy to maintain



Model 8500A

Flame Trap Assembly

- Unit protects against flame propagation into upstream piping
- Unit composed of horizontal flame arrester and thermal operated shut-off valve
- Valve has low temperature fusible type element to shut off flow in the event of a flashback
- Element may be replaced without disassembly of valve



Model 2300A

Pressure Relief Vent

- Corrosion-resistant construction
- Self-closing air cushion pallet with center stabilizing stem and peripheral guidance provides uniform seating and alignment

GAS SAFETY AND CONTROL EQUIPMENT (continued)



Model 8170

Manometer

- Solid acrylic assembly with shatter-proof tube and scale protect against dust, dirt and rain
- Any number of tubes may be mounted side by side
- Long-lasting and designed for easy cleaning and maintenance



Model 8110

Back Pressure Check Valve

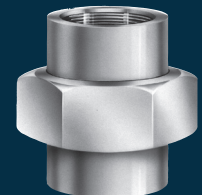
- Allows full flow with low working pressure
- Easy maintenance by quickly removing cover and replacing pallet
- Variety of materials available
- Flanged connection standard



Model 7622

Flame Checks

- Easy disassembly to replace or clean screens
- High flow capacity
- Element of perforated plates provide minimum pressure drop and still prevent flashbacks in pilot lines



Model 8391B - Waste Gas Burner Model 8392B - Flame Front Generated Ignition Model 8393B - Fully Enclosed

Waste Gas Burners

- Engineered to burn all waste gas even when flow is variable
- Fully automated and easily maintained
- High destruction efficiency



ver Road
g, IL 60173
Fax: 847.885.0303
pment.com





GROTH CORPORATION

13650 N. Promenade Blvd.
Stafford, TX 77477 USA
Phone: (281) 295-6800
Toll Free: (800) 354-7684
Fax: (281) 295-6999
E-mail: sales@grothcorp.com



Available When Specified

 	<p>HEADQUARTERS // 3160 W. Heartland Drive Liberty, MO 64068 USA Ph [816] 792 1500 Fax [816] 792 2277 sales@contdisc.com</p>	<p>contdisc.com</p>
---	---	---

THE NETHERLANDS
Energieweg 20
2382 NJ Zoeterwoude-Rijndijk
The Netherlands
Ph +(31) 71 5412221 | Fax +(31) 71 5414361
cdcnl@contdisc.com

CHINA
Room 910, Tower B, COFCO Plaza
No. 8 JianGuoMenNei Avenue
Beijing (100005), P.R. China
Ph +(86) 10 522 4885 | Fax +(86) 10 6522 2885
cdcchina@contdisc.com

INDIA
423/P/11, Mahagujarat Industrial Estate, Moraiya,
Sarkhej-Bavla Road, Ahmedabad (GJ)
382213 INDIA
Ph +(91) 2717 619 333 | Fax +(86) 10 6522 2885
gcmpl@contdisc.com

Represented by: 

1185 Tower Road
Schaumburg, IL 60173
Ph: 847.885.0300 Fax: 847.885.0303
lindenequipment.com

www.grothcorp.com